

# Luvenca

**User Manual**

v1.6

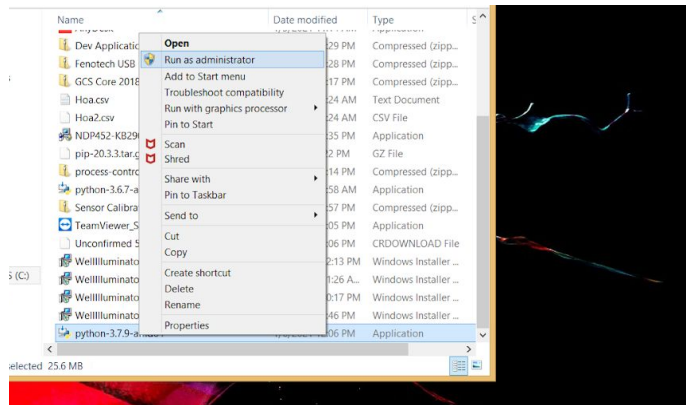
**MEDNA**

# Index

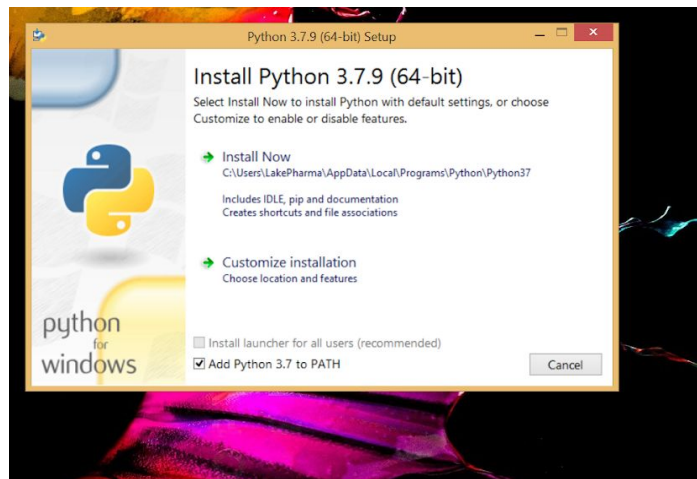
- I. Installation
  - A. Downloading and Installing
  - B. Instrument setup
- II. Running Absorbance Graph
  - A. Starting the server
  - B. Opening Dashboard
- III. Troubleshooting

# Installation:

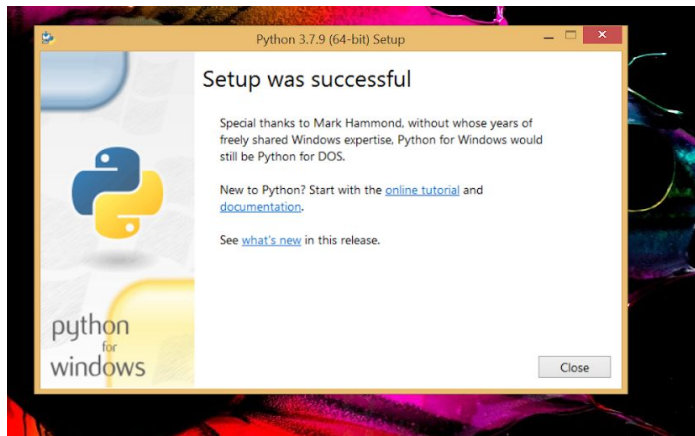
1. Download "[check\\_python\\_install.bat](#)" and run.
  - a. If it returns "Python installed -- OK", close windows and proceed to Step 2
  - b. If it returns "Python NOT installed", close windows and download <https://www.python.org/ftp/python/3.7.9/python-3.7.9-amd64.exe> and install via process below:
    - i. Right Click > Run as administrator



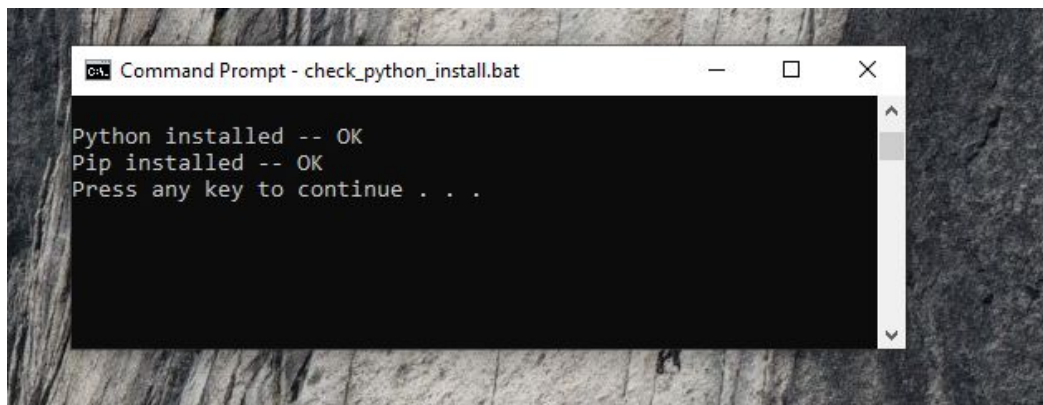
- ii. Ensure "Add Python 3.7 to PATH" is checked, then click "Install Now"



- iii. Once the install is complete click "Close"

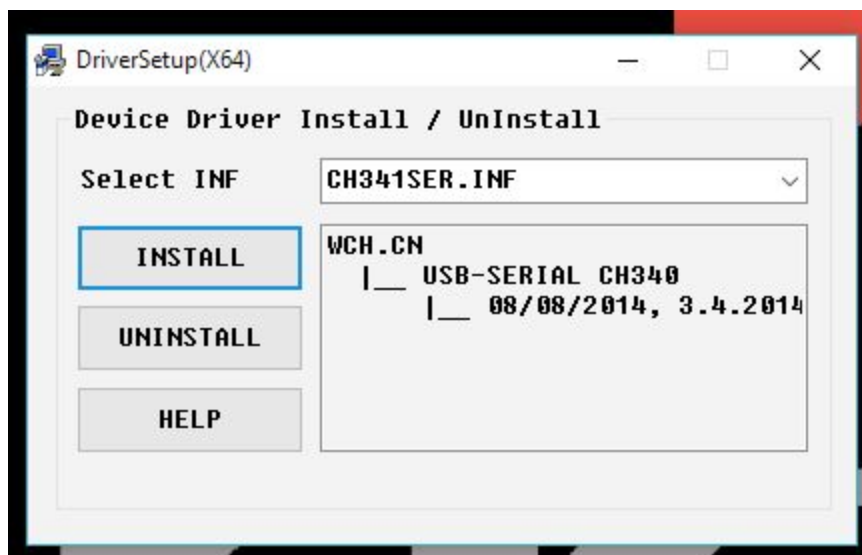


- iv. After closing re-run "check\_python\_install.bat" and confirm the output is:

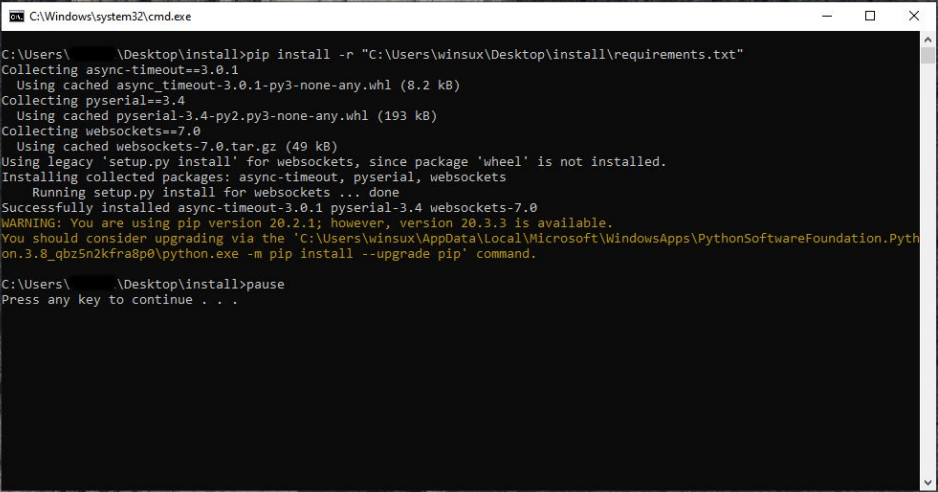


2. Install the USB drivers

- Double-click "CH341SER.EXE"
- Click the "Uninstall" button first. Then click on the "Install" button.



3. Ensure Power is connected to Luvenca
    - a. (Diagram of the rear of the instrument showing power jack)
  4. Ensure PC is connected using the included USB
    - a. (Diagram with Luvenca, usb cable, and laptop)
  5. Download [Luvenca software](#). UNZIP to Desktop.
  6. Install software requirements:
    - a. Open the Luvenca directory
    - b. Double Click “install.bat” file
      - i. On the notification: “... allow the following program to make changes to your device” ... Click “Yes”
- c. Successful Installation will look like this:

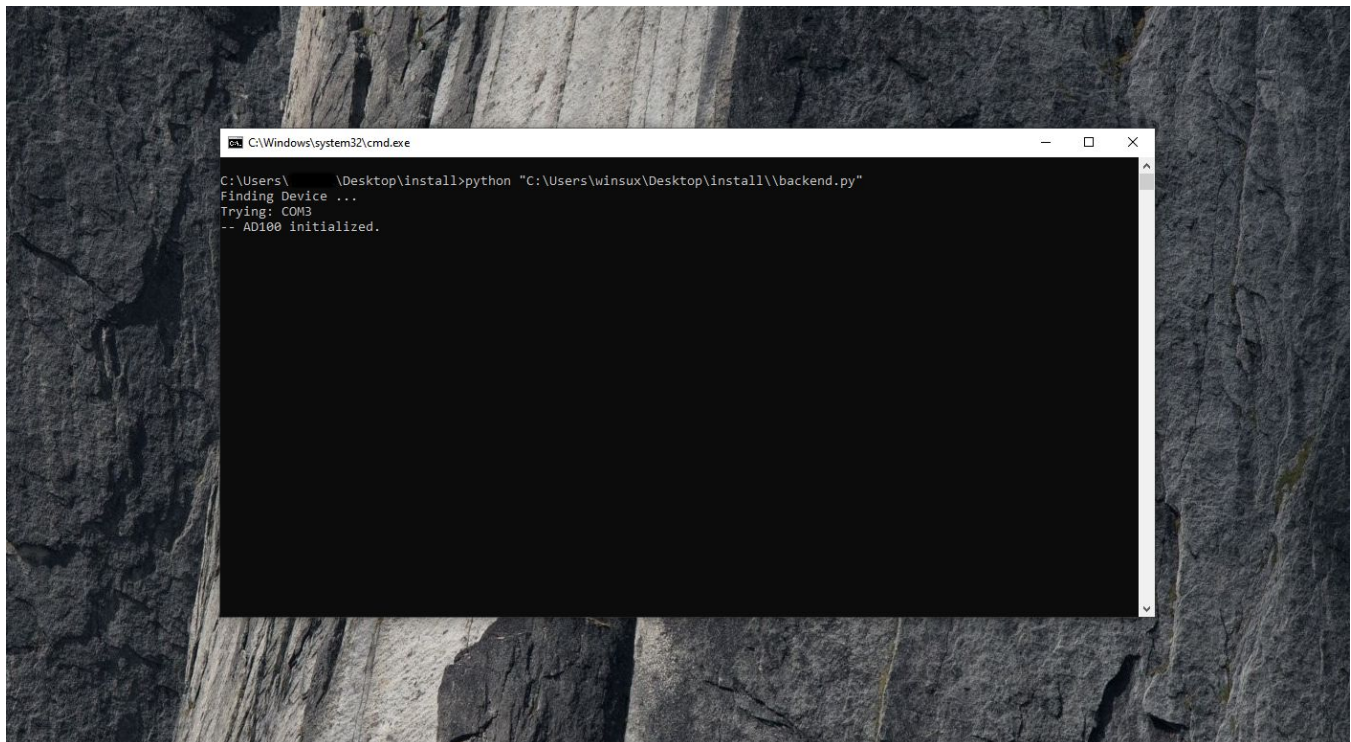


```
C:\Windows\system32\cmd.exe
C:\Users\  \Desktop\install>pip install -r "C:\Users\winsux\Desktop\install\requirements.txt"
Collecting async-timeout==3.0.1
  Using cached async_timeout-3.0.1-py3-none-any.whl (8.2 kB)
Collecting pyserial==3.4
  Using cached pyserial-3.4-py2.py3-none-any.whl (193 kB)
Collecting websockets==7.0
  Using cached websockets-7.0.tar.gz (49 kB)
Using legacy 'setup.py install' for websockets, since package 'wheel' is not installed.
Installing collected packages: async-timeout, pyserial, websockets
  Running setup.py install for websockets ... done
Successfully installed async-timeout-3.0.1 pyserial-3.4 websockets-7.0
WARNING: You are using pip version 20.2.1; however, version 20.3.3 is available.
You should consider upgrading via the 'C:\Users\winsux\AppData\Local\Microsoft\WindowsApps\PythonSoftwareFoundation.Pyth
on.3.8_qbz5n2kfra8p0\python.exe -m pip install --upgrade pip' command.

C:\Users\  \Desktop\install>pause
Press any key to continue . . .
```

## Running Absorbance Graph:

- Ensure Instrument is powered on
- Ensure Luvenca is connected to PC via USB cable
- Run the server
  - Open the Luvenca file
  - Double Click “run\_server”
  - Wait for “-- AD100 initialized”



- Open Dashboard
  - Within the “Luvenca” file locate “run\_client” and double click (open with Firefox)
- Run instrument until Absorbance plateaus ( indicating LED reaches operating equilibrium )
- Click “Set Zero”



## Troubleshooting:

- \*\*\* SENSOR INITIALIZATION FAILED \*\*\*
  - Some older versions of windows may require a specific USB driver available here:  
[https://cdn.sparkfun.com/assets/learn\\_tutorials/8/4/4/CH341SER.EXE](https://cdn.sparkfun.com/assets/learn_tutorials/8/4/4/CH341SER.EXE)

